

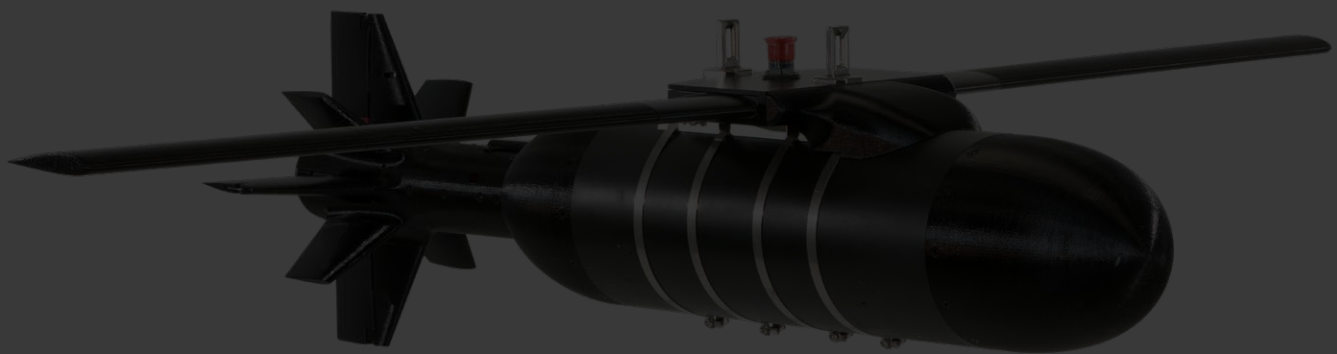
# ADASI

## RASH - 2H

# AUTONOMOUS ATTACK. MISSION CONFIGURABLE.

RASH – 2H is a low-cost, high-precision guided munition system capable of swiftly engaging unexpected small-to medium-sized threats. The system is ideal for patrol missions, border security, and accurately eliminating high-value threats.

Compact enough for integration into most tactical unmanned and manned aerial platforms (rotary and fixed-wing), this modern glider system features advanced automation and communication technologies. Designed and manufactured in the UAE, the RASH – 2H can support up to 24 precision guided munitions, giving users maximum flexibility during the retrofit process.



# SPECIFICATIONS

## KEY FEATURES

- Integrates into most tactical unmanned and manned aerial platforms (rotary and fixed-wing)
- Up to 24 launch slots and guided munitions possible
- Modular and configurable

## SYSTEM OVERVIEW

- Optional payload camera with target coordinates
- Fully autonomous flight control

## SPECIFICATIONS

<b>Wingspan</b>	1m
<b>Weight of guided munition</b>	14.5 kg
<b>Max altitude</b>	25,000 ft
<b>Max range at 5000 ft altitude</b>	3.6 km
<b>Max range at 10000 ft altitude</b>	8.6 km
<b>Max range at 15000 ft altitude</b>	13.7 km
<b>Max range at 20000 ft altitude</b>	18 km
<b>Max range at 25000 ft altitude</b>	23 km
<b>Max operating speed</b>	140 m/s (500 km/h)
<b>Communications (control hub to guided munition)</b>	UHF link
<b>Flight control</b>	Fully autonomous
<b>Guidance</b>	GPS INS (optional 2nd GPS receiver possible)
<b>Current targeting</b>	Payload or fixed coordinates
<b>Future targeting</b>	Laser designation system
<b>Max dive angle</b>	30-60 degrees
<b>Fuse type</b>	Impact and Proximity

## WARHEAD SPECS

<b>Caliber</b>	129 m
<b>Length</b>	350 mm
<b>Number of fragments</b>	10700
<b>Lethal Radius</b>	=> 60 m
<b>Weight</b>	11.6 kg